



SANGIORGIO IT WASH

HOME APPLIANCES

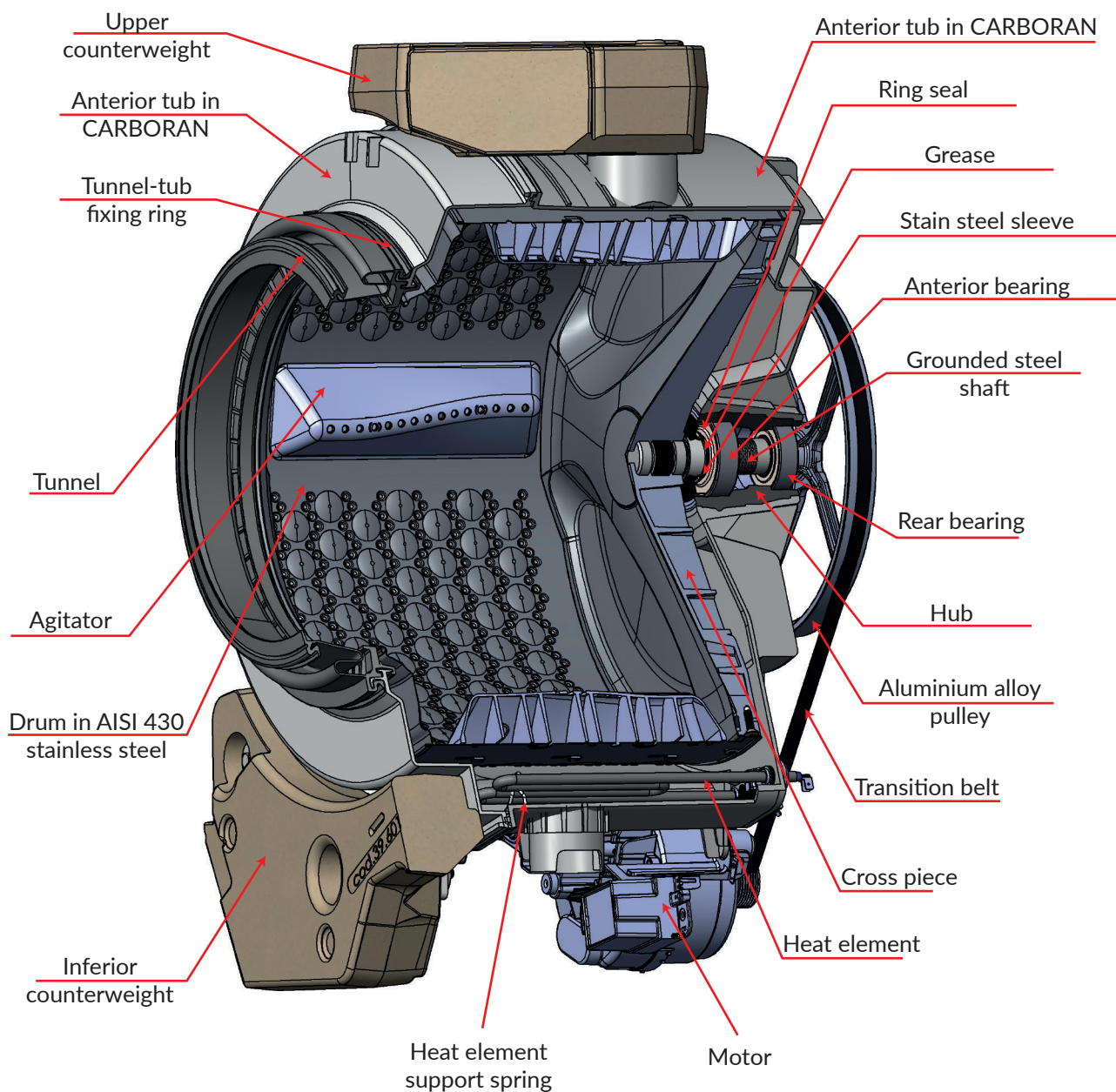


COLLECTION 2024 - 2025

F4C Family	4
F4 Advance Family	6
F4 LED Family	8
Evolution Family	10
New Evolution Family	12
Essential G Family	14
Hybrid Family	16
Heat Pump Dryer	20
Doors Type and Cabinet Colours	22
Coming Soon - H6 Project.....	23



The new Sangiorgio range is equipped with the new "Pearl" drum which has the enhanced convex surface respects the daintiness of fabrics even at high spin speeds. The "Pearl" like design exerts a mechanical action on the fabrics, which helps in the slackening of the fibers ensuring an excellent level of cleanliness. The drum made of AISI 430 stainless steel ensures high resistance to corrosion with excellent sealing and reliability over time.



The New Evolution and F4 range offer the largest pearl-shaped drums in the category, with a pothole diameter of 325 mm, which makes it easy to position laundry inside the drum.

The large internal dimensions make it possible to reach up to 10 kg of loading capacity, guaranteeing the best washing performance.



PRODUCT DETAILS

EN60456 2022 year	EN60456 2019 year	Type	Kg	RPM	Drum Size	Depth	Door Type	Capacity 40HC
		FS614CC	6	1400	42 lt	435 mm	5-6-8-9	246
		FS714CC	7	1400	48 lt	450 mm	5-6-8-9	236
		F814CC	8	1400	56 lt	533 mm	5-6-8-9	177
		F914CC	9	1400	64 lt	561 mm	5-8-9	168
		FM12CC	10,5	1200	71 lt	592 mm	5-8-9	162
		FM14CC		1400				



WASHING PROGRAMMES

1. Cotton
2. Eco 40-60
3. Synthetic
4. Rapid 15 min.
5. Memory
6. Duvet
7. Jeans/Coloured
8. Self-cleaning
9. Delicate
10. Mix
11. Curtain
12. Wool
13. Steam
14. Rinse
15. Centrifuge

ADDITIONAL OPTIONS

- Pre-wash
- Extra Rinse
- 3 selectable stain levels
- Soaking
- Eco
- Rinse Hold

MAIN FEATURES

- Electronic controller
- Inverter motor
- Delayed start (1 - 24 hours)
- Spin speed adjustment
- Temperature adjustment
- Eco silence
- Stain level adjustment
- Programme progress indicator
- Self-regulation of water consumption
- Self-load balancing during spinning
- Digital displays
- Remaining time
- Program progress indicator
- Washing end buzzer

Safety

- Child safety lock
- Time to end
- Anti-overflow
- Anti-foam
- Overheating control
- Diagnostic



PRODUCT DETAILS

EN60456 2022 year	EN60456 2019 year	Type	Kg	RPM	Drum Size	Depth	Door Type	Capacity 40HC
		FS612CD	6	1200	42 lt	435 mm	5-6-8-9	221
		FS712CD	7	1200	48 lt	450 mm	5-6-8-9	177
		F812CD	8	1200	56 lt	533 mm	5-6-8-9	177
		F912CD	9	1200	64 lt	561 mm	5-8-9	168
		FM12CD	10,5	1200	71 lt	592 mm	5-8-9	162



WASHING PROGRAMMES

1. Cotton
2. Eco 40-60
3. Synthetic
4. Rapid 15 min.
5. Memory
6. Duvet
7. Jeans/Coloured
8. Self-cleaning
9. Delicate
10. Mix
11. Curtain
12. Wool
13. Steam
14. Rinse
15. Centrifuge

ADDITIONAL OPTIONS

- Pre-wash
- Extra Rinse
- 3 selectable stain levels
- Soaking
- Eco
- Rinse Hold

MAIN FEATURES

- Electronic controller
- Universal motor
- Delayed start (1 - 24 hours)
- Spin speed adjustment
- Temperature adjustment
- Stain level adjustment
- Programme progress indicator
- Self-regulation of water consumption
- Self-load balancing during spinning
- Digital displays
- Remaining time
- Program progress indicator
- Washing end buzzer

Safety

- Child safety lock
- Anti-overflow
- Anti-foam
- Overheating control
- Diagnostic



PRODUCT DETAILS

EN60456 2022 year	EN60456 2019 year	Type	Kg	RPM	Drum Size	Depth	Door Type	Capacity 40HC
		FS510AL	5	1000	39 lt	435 mm	7	246
		FS610AL	6	1000	42 lt	450 mm	7	236
		FS612AL		1200				
		F710AL	7	1000	48 lt	515 mm	7	177
		F712AL		1200				
		F812BL	8	1200	64 lt	533 mm	7	177



WASHING PROGRAMMES

1. Cotton
2. Eco 40-60
3. Synthetic
4. Rapid 15 min.
5. Memory
6. Duvet
7. Jeans/Coloured
8. Self-cleaning
9. Delicate
10. Mix
11. Curtain
12. Wool
13. Steam
14. Rinse
15. Centrifuge

ADDITIONAL OPTIONS

- Pre-wash
- Extra Rinse
- Rinse Hold

CABINET COLORS AND DOORS

- Electronic controller
- Universal motor
- Delayed start (2-4-6-9 hours)
- Spin speed adjustment
- Temperature adjustment
- Programme progress indicator
- Self-regulation of water consumption
- Self-load balancing during spinning
- LED indicators
- Program progress indicator
- Washing end buzzer

Safety

- Child safety lock
- Anti-overflow
- Anti-foam
- Overheating control
- Diagnostic



PRODUCT DETAILS

EN60456 2022 year	EN60456 2019 year	Type	Kg	RPM	Drum Size	Depth	Door Type	Capacity 40HC
		EES510D	5	1000	39 lt	450 mm	7	246
		EES612D	6	1200	42 lt	510 mm	7	236
		EES710D	7	1000	48 lt	533 mm	7	177



WASHING PROGRAMMES

1. Cotton
2. Eco 40-60
3. Synthetic
4. Express 30 min.
5. Delicate
6. Duvet
7. Jeans/Coloured
8. Self-cleaning
9. Curtain
10. Sport/Fitness
11. Curtain
12. Shirt
13. Wool
14. Rinse
15. Spin

ADDITIONAL OPTIONS

- Pre-wash
- Extra Rinse
- Rinse Hold

MAIN FEATURES

- Electronic controller
- Universal motor
- Delayed start (1 - 24 hours)
- Spin speed adjustment
- Temperature adjustment
- Programme progress indicator
- Self-regulation of water consumption
- Self-load balancing during spinning
- Green digit display
- Washing residual time
- Program progress indicator
- Delayed start

Safety

- Child safety lock
- Anti-overflow
- Anti-foam
- Overheating control
- Diagnostic



PRODUCT DETAILS

EN60456 2022 year	EN60456 2019 year	Type	Kg	RPM	Drum Size	Depth	Door Type	Capacity 40HC
		ENS812D	8	1200	56 lt	533 mm	5-6	177



WASHING PROGRAMMES

1. Cotton
2. Eco 40-60
3. Synthetic
4. Express 30 min.
5. Delicate
6. Duvet
7. Jeans/Coloured
8. Self-cleaning
9. Curtain
10. Sport/Fitness
11. Curtain
12. Shirt
13. Wool
14. Rinse
15. Spin

ADDITIONAL OPTIONS

- Pre-wash
- Extra Rinse
- Rinse Hold

MAIN FEATURES

- Electronic controller
- Universal motor
- Delayed start (1 - 24 hours)
- Spin speed adjustment
- Temperature adjustment
- Programme progress indicator
- Self-regulation of water consumption
- Self-load balancing during spinning
- Green digit display
- Washing residual time
- Program progress indicator
- Delayed start

Safety

- Child safety lock
- Anti-overflow
- Anti-foam
- Overheating control
- Diagnostic



PRODUCT DETAILS

EN60456 2022 year	EN60456 2019 year	Type	Kg	RPM	Drum Size	Depth	Door Type	Capacity 40HC
		G610	6	1000	42 lt	510 mm	7	236
		G612		1200				
		G710	7	1000	48 lt	535 mm	7	177
		G712		1200				
		G812	8	1200	56 lt	535 mm	7	177



WASHING PROGRAMMES

1. Cotton cold
2. Cotton 20°C
3. Cotton 40°C
4. Cotton Pre-wash 60°C
5. Cotton 90°C
6. Rapid 30°C
7. Rinse
8. Drain/Spin
9. 30°C Delicate
10. 40°C Wool
11. Cold synthetic
12. 40°C synthetic
13. 60°C synthetic
14. 40°C Intensive
15. Eco 40-60

ADDITIONAL OPTIONS

- Extra Rinse
- Rinse Hold

MAIN FEATURES

- Electronic controller
- Universal motor
- Anti-overflow
- Spin regulation
- Programme advancement status indicator
- Water consumption self-regulation
- Load self-balancing in spinning
- LED indicators
- Error indicator

Safety

- Child safety lock
- Anti-overflow
- Anti-foam
- Overheating control



PRODUCT DETAILS

EN60456 2022 year	EN60456 2019 year	Type	Kg	RPM	Drum Size	Depth	Door Type	Capacity 40HC
		II510	5	1000	42 lt	510 mm	7	221
		II610	7	1000	48 lt	533 mm	7	177
		II810	8	1100	56 lt	533 mm	7	177



WASHING PROGRAMMES

Cotton

- Pre-wash cold - 90°C
- Energetic cold - 90°C
- Eco 40-60; 30 - 60°C
- Lingerie cold - 50°C
- Rinse
- Softener
- Spin

Synthetic

- Pre-wash cold - 60°C
- Daily cold - 60°C
- Delicate cold - 40°C
- Rinse
- Softener
- Spin

Wool

- Wool cold - 40°C
- Hand-wash cold - 40°C
- Rinse
- Softener
- Drain

ADDITIONAL OPTIONS

- Acqua +

CABINET COLORS AND DOORS

- Hybrid timer
- Universal motor
- Programme progress indicator
- Spin reduction
- Hybrid timer
- Temperature variation
- Programme progress indicator

Safety

- Anti-foam
- Overheating control

SANGIORGIO *IT WASH*

HEAT PUMP DRYER



HEAT PUMP DRYER Seen Closely

Detail that makes a difference

SCRATCH-RESISTANT TEMPERED GLASS DOOR



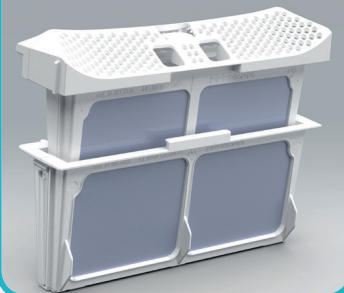
STAINLESS STEEL DRUM



INTERNAL VIEW HUMIDITY SENSORS



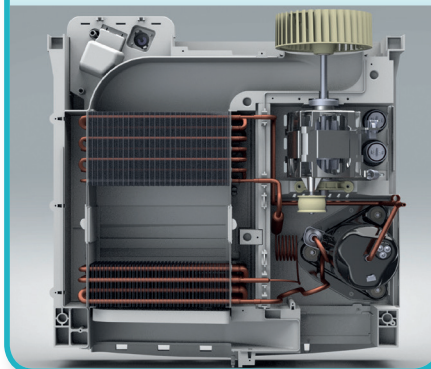
DOUBLE EASYCLEA FILTER



DELICATE DRUM



HEAT EXCHANGERS WITH COPPER TUBE



EVAPORATOR FOAM FILTER





PRODUCT DETAILS

EN60456 2019 year	Type	Kg	Technology	Depth	Motor	Capacity 40HC
A++	SDR8P	8	Heat Pump	630 mm	Universal	153
A+++	SDR8I	8	Heat Pump	630 mm	Inverter	153
A++	SDR9P	9	Heat Pump	630 mm	Universal	153
A+++	SDR9I	9	Heat Pump	630 mm	Inverter	153



DRYER PROGRAMMES

- 1. Cotton
- 2. Intensive (Eco Dry)
- 3. Synthetic
- 4. Rapid
- 5. Shirts
- 6. Towels
- 7. Jeans/Coloured
- 8. Duvet
- 9. Sports/Fitness
- 10. Delicate
- 11. Bes sheet
- 12. Wool
- 13. Mix
- 14. Timed drying (ambient air)
- 15. Timed drying (hot air)

MAIN FEATURES

- Heat pump technology with R290 gas
 - Universal or Inverter motor
 - Delayed start (1-24 hours)
 - Easy Iron: softens and facilitates ironing
 - Wardrobe: ready to be stored in the wardrobe
 - Extremely dry: ready to wear
 - Rotation inversion
 - Half load
 - LED lighting
 - Digital displays
 - Full tank indicator
 - Programme progress status
 - Filter cleaning indicator
 - End of drying acoustic signal
- Safety**
- Child lock

Doors Type



Door Type 5 - Ø 480mm



Door Type 6 - Ø 480mm



Door Type 7 - Ø 430mm



Door Type 8 - Ø 480mm



Door Type 9 - Ø 480mm

COLORS AVAILABLE



White Cabinet



Silver Cabinet



Black Cabinet



PRODUCT DETAILS



- New modern design
- Larger door with integrated handle
- Larger touch screen
- WiFi connection
- Steam program
- Inox steel drum
- Inverter motor
- Eco silence
- Memory program
- 16 washing programs
- 8 options washing programs



SANGIORGIO **IT WASH**

Via Delle Industrie, 160 - 80011 ACERRA (NA)

Contacts:

Tel: +39 0818446540

Mail: info@itwash.it

Web: www.sangiorgioeletrodomestici.it